

DESCRIPTION

As a member of the SOLO series of unitary controllers, the MC1 is a economically feasible direct digital controller, providing many of the same features as other unitary controllers. Unlike other programmable controllers, the MC1 has additional internal algorithms available to allow the MC1 to operate in many applications without custom programming.

FEATURES

- 8 Universal Inputs with switch selectable setup
- 3 Analog Outputs, 0-10vdc
- 4 Triac Outputs, 24VAC @ 1A
- Advanced control object such as Math objects, Optimal Start/Stop scheduling, parallel loop compare, summer/winter mode configuration
- Flexible alarming capabilities
- Various control loops and canned algorithms such as Thermostatic Loops, PID Loops, Motor Control, and Fan Coil Thermostatic Control capabilities
- Input value broadcasting capabilities in networked token passing applications with other devices such as DX1 and GX1
- 1 custom sensor curve table, allowing users to implement third-party sensors
- Occupancy Override capabilities via optional SOLO-Stat
- Digital Input monitoring capabilities



The SOLO-Stat

The SOLO-Stat is a wall-mountable room thermostat that is used with the SOLO family of American Auto-Matrix Unitary Controllers. The device is capable of providing temperature sensing, sliding setpoint adjusting, push-button override access (typically used for schedule override), and an auxiliary slide switch typically used for override applications packaged in traditional enclosure that matches most third-party wall-mountable offerings.

- Built-in Precon Type-3 Thermistor
- Five-Position setpoint adjustment switch
- RJ-11 and screw-terminal connections for wiring
- Diagnostic override LED indicator



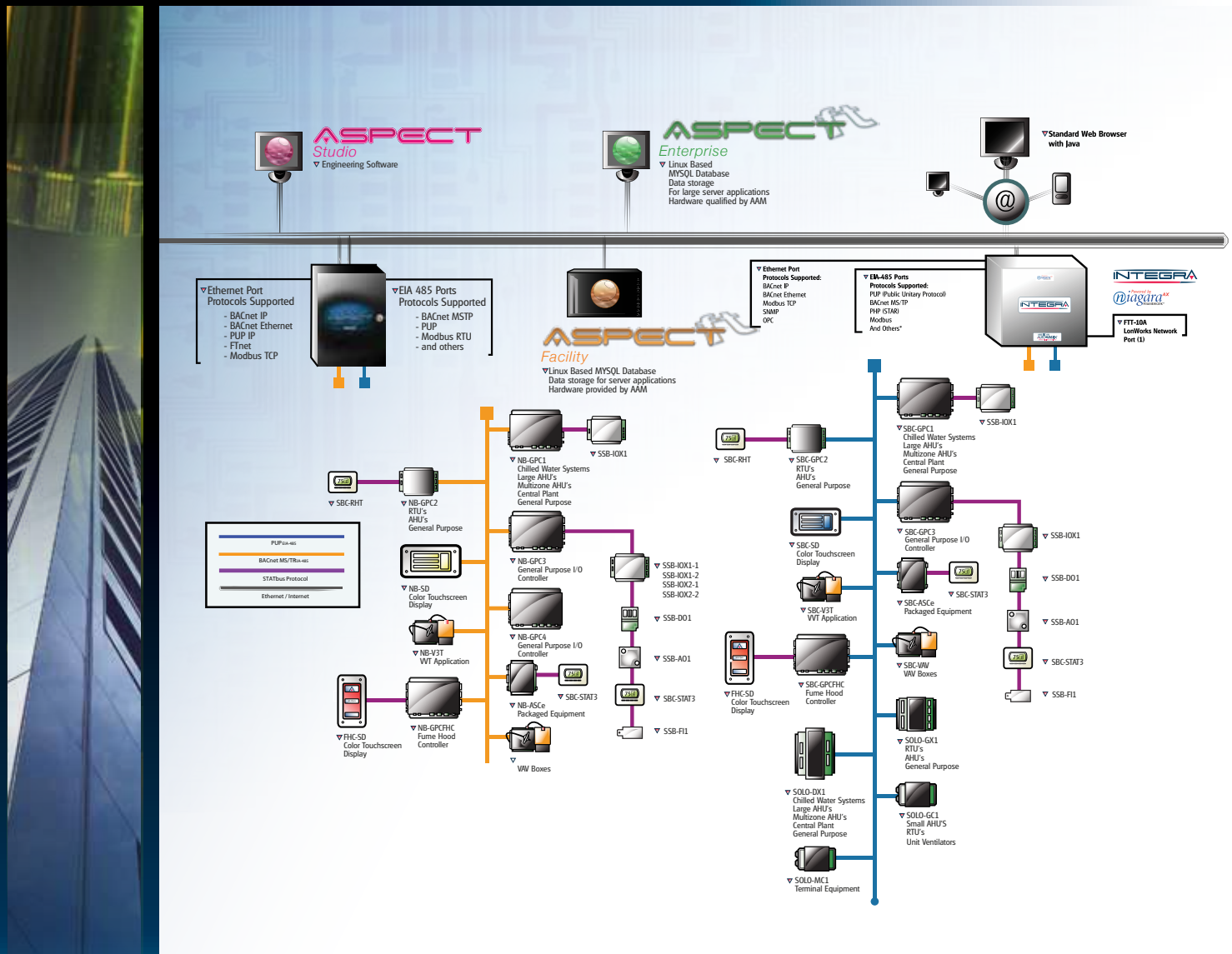
SOLO-MC1

Direct Digital Controller

AMERICAN
AUTO-MATRIX®
SMART BUILDING SOLUTIONS®

AMERICAN AUTO-MATRIX® SOLO-MC1 Direct Digital Controller

SYSTEM ARCHITECTURE



SPECIFICATIONS

Mounting	Terminations	Input Supply
<ul style="list-style-type: none"> Flat surface with screws, steel shroud 	<ul style="list-style-type: none"> Pluggable 0.2 in. (5.08 mm.) terminal blocks 	<ul style="list-style-type: none"> NEC class II transformer 24VAC, 50/60Hz, 20VA maximum Fused at 1A for load protection
Dimensions	Operating Environment	Agency Listings
<ul style="list-style-type: none"> Overall size: 7.4 x 4.4 x 1.6 in. (18.8 x 11.24 x 4.1 cm.) Shipping weight: 1.3 lbs. (0.6 kg.) 	<ul style="list-style-type: none"> Operating temperature: 32 to 158°F (0 to 70°C) Relative humidity: 0 to 95% noncondensing 	<ul style="list-style-type: none"> UL listed 916, Management Equipment, Energy (PAZX) FCC rules Part 15 Class B computing Device UL Recognized 873, Component-Temperature Indicating and Regulating Equipment Complies with CE directives and standards

American Auto-Matrix is a Service-Disabled Veteran-Owned Small Business / Woman-Owned Business (CCR Cage #4LL80)

One Technology Lane Export, Pennsylvania 15632-8903 U.S.A Tel (1) 877-AAM-HVAC Fax (1) 724-327-6124

Email: aam@aamatrix.com On the Web: www.aamatrix.com

